

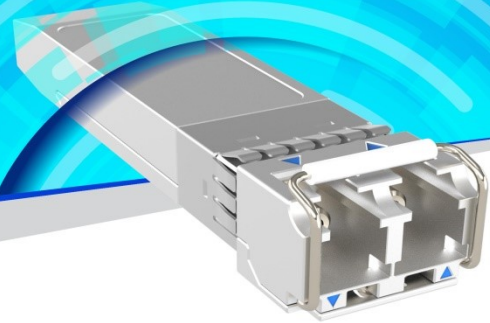
PRODUCT DETAILS

Eoptolink's 25G SFP28 ZR Optical Transceiver



EOLP-1325G-80-RXC Series

Single-Mode, 25G SFP28
With DDM and Dual CDR



Product Description

The EOLP-1325G-80-RXC optical supports high speed serial links over single-mode optical fiber at signal rates up to 25.78Gb/s. The product is compliant with Small Form Plug-gable industry agreements SFP and SFP28 for mechanical and low speed electrical specifications.

The transmitter side of the module incorporates one 1300nm EML and CDR integrated with EML driver, and the receiver side integrated with SOA and PIN-TIA followed by Rx CDR.

Digital diagnostic monitoring information (DMI) is present in this module per the requirements of SFF-8472, providing real time monitoring information of transceiver laser, receiver and environment conditions over a SFF-8419 2-wire serial interface.

Features

- Operating Data Rate Support 25.78Gbps
- 1300nm EML laser on transmitter side
- Integrated SOA and PIN TIA on receiver side
- Single 3.3V Power Supply
- Distance up to 80km over SMF
- Duplex LC Connector Interface, Hot Pluggable
- Built-in Dual CDR
- Compliant with MSA SFP+ Specification SFF-8472
- Power Dissipation:
 - Commercial temperature <2.5W
 - Industrial temperature <3.5W

- Operating Case Temperature:
 - Commercial: 0°C~+70°C
 - Industrial: -40°C~85°C
- Safety Certification: TUV/UL/FDA*¹

Applications

- 25GbE applications with FEC on host side
- Other Optical Link



Ordering Information

Part No.	Data Rate	Fiber	Distance* ³	CDR	Interface	Temp.	DDMI
EOLP-1325G-80-RC* ²	25.78Gbps	SMF	80km	YES	LC	0°C~+70°C	YES
EOLP-1325G-80-RIC* ⁴	25.78Gbps	SMF	80km	YES	LC	-40°C~85°C	YES

*1: For the latest certification information, please check with Eoptolink.

*2: 80km applications with FEC on host side.

*3: Over SMF.

*4: Industrial version.

*The product image is only for reference purpose.



Quality

Eoptolink Technology has passed many quality system verifications, established an internationally standardized quality assurance system and strictly implemented standardized management and control in the course of design, development, production, installation and service. For latest certification/accreditation numbers, please, contact us.



Notice

Eoptolink reserves the right to make changes or discontinue any optical link product or service identified in this publication, without notice, in order to improve design and/or performance. Applications that are described herein for any of the optical link products are for illustrative purposes only. Eoptolink makes no representation or warranty that such applications will be suitable for the specified use without further testing or modification.

Eoptolink Technology Inc., Ltd.

Add: No.127 West Wulian Street, Shuangliu District, Chengdu City 610213, P.R.China.

Tel: +86-028-6708 7983 (HQ); +86-028-6708 7999

Fax: +86-028-6708 7979

Email: sales@eoptolink.com

<http://www.eoptolink.com/>