

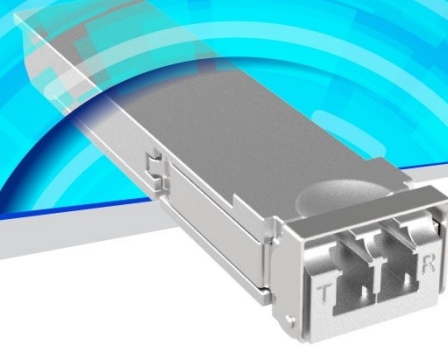
PRODUCT DETAILS

Eoptolink's 100G 40km CFP4 Optical Transceiver



EOLC-161HG-S-40-L7

100G Datacom & Telecom connections,
100G 4WDM-40 40km applications with FEC, CFP4
With Duplex LC Connector Interface



Product Description

Eoptolink's CFP4 transceiver module is designed for 100 Datacom & Telecom connections and 100G 4WDM-40 40km applications with FEC links over 40km single-mode fiber. The module has 4 independent electrical input/output channels, and the operating speed of each channel is up to 25Gbps. This transceiver consists of transmitter and receiver units and operates on a set of 4 wavelengths near 1310nm on the ITU G.694.1 LAN-WDM grid. The transmitter unit contains a Tx CDR, a 4-channel modulator driver and a 4-channel EML. On the receiver path, there are a 4-channel PIN arrays and a 4-channel TIA arrays, as well as Rx CDR.

Features

- Supports 103Gbps aggregate bit rates
- Single 3.3V Power Supply
- Up to 40km transmission on SMF with FEC
- Hot-Pluggable CFP4 Footprint Duplex LC Connector Interface
- Integrated High Performance EML TOSA and High

Sensitivity APD ROSA

- Class 1 FDA and IEC60825-1 Laser Safety Compliant
- RoHS6 Compliant
- Operating Case Temperature Standard: 0°C to 70°C
- Compliant with CFP4 MSA Specification
- MDIO interface with integrated Digital Diagnostic Monitoring

- No external reference clock

Applications

- 100G Datacom & Telecom connections
- 100G 4WDM-40 40km applications with FEC

Ordering Information



Part No.	Data Rate* ¹	Fiber	Distance* ²	Interface	Temp.	DDMI
EOLC-161HG-S-40-L7	103.125Gbps	SMF	40km	LC	Standard	Yes

*1: Switching between 100GBASE-LR4 and OTU4 411-9D1F through MDIO.

*2: 9/125µm SMF

*The product image is only for reference purpose.

Quality

Eoptolink Technology has passed many quality system verifications, established an internationally standardized quality assurance system and strictly implemented standardized management and control in the course of design, development, production, installation and service. For latest certification/accreditation numbers, please contact us.



Notice

Eoptolink reserves the right to make changes or discontinue any optical link product or service identified in this publication, without notice, in order to improve design and/or performance. Applications that are described herein for any of the optical link products are for illustrative purposes only. Eoptolink makes no representation or warranty that such applications will be suitable for the specified use without further testing or modification.

Eoptolink Technology Inc., Ltd.

Add: No.127 West Wulian Street, Shuangliu District, Chengdu City 610213, P.R.China.

Tel: +86-028-6708 7983 (HQ); +86-028-6708 7999

Fax: +86-028-6708 7979

Email: sales@eoptolink.com

<http://www.eoptolink.com/>